

Sophos Anti-Virus for Windows NT/Windows 2000

Sophos Anti-Virus (SAV) for Windows NT or 2000 is virus detection and disinfection software which can be installed on Windows NT or 2000 file servers and workstations. It checks local hard disks, floppy disks and networks, Internet downloads, email attachments for the presence of viruses, including Macintosh viruses in files stored on the server. It operates in scheduled, on-access and on-demand modes. Its unique architecture intelligently determines which files need to be virus checked, maximising user transparency and minimising performance overhead. Flexible configuration options mean that SAV can make the most efficient use of workstation and network resources.

How it works

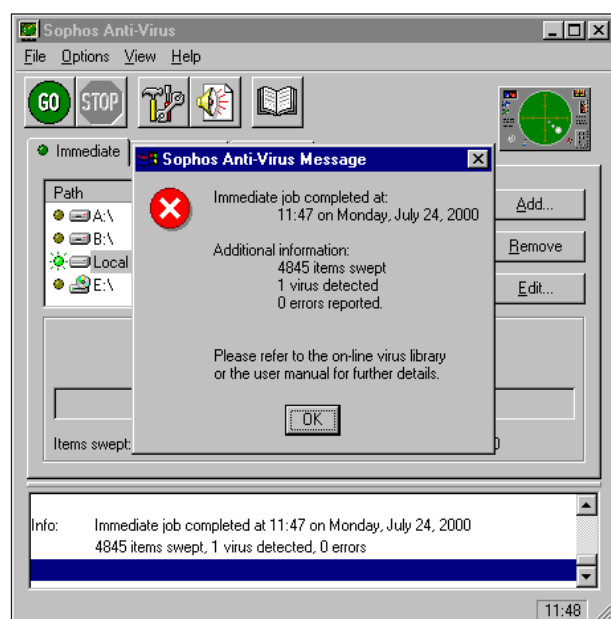
Sophos Anti-Virus for Windows NT or 2000 has three components:

- **SWEEP** provides on-demand and scheduled virus checking of files on Windows NT or 2000 file servers or workstations.
- **InterCheck** provides local on-access virus checking on Windows NT or 2000 workstations. InterCheck also provides server based on-access virus checking for networked non-Windows NT or 2000 workstations.
- **Sophos Anti-Virus Interface (SAVI)** allows third-party software developers to integrate their firewall, gateway and similar applications with Sophos Anti-Virus.

Infected files are either removed or positively overwritten. Infected boot sectors on floppy disks and infected documents can be disinfected.

Features

- Is updated twelve times a year, and urgent interim updates can be downloaded from the Sophos website or requested to be sent by fax or email.
- Easily detects polymorphic viruses using Sophos's advanced Virus Description Language (VDL) and a built-in code emulator.
- Detects and disinfects Microsoft Office macro viruses.
- Scans inside encoded and archive files.
- Allows deployment of SAV across an entire NT or 2000 network from a central NT or 2000 workstation.
- Provides automatic updating for networked PCs.
- Allows multiple scheduled jobs to be configured for automatic operation, even when no-one is logged in.
- Prevents non-administrative users from altering scan settings or disabling InterCheck's on-access scanning.
- Ensures total security by providing automatic centralised reporting of every virus incident.
- Includes an extensive on-line virus information database.
- Is available in multiple language versions.
- Allows pull-based, automated retrieval of Sophos Anti-Virus updates from the Sophos website.
- Provides on-screen expert help.
- Protects WANs, LANs, portables and standalones.
- Provides Sophos Anti-Virus for Windows NT or 2000 servers and workstations, DOS/Windows 3.1x, Win95/98/Me and Macintosh, all as part of a single licence.



Sophos Anti-Virus for Windows NT/2000 finding a virus



Technical details

Product name	Sophos Anti-Virus for Windows NT/Windows 2000.
Function	Scanning individual workstations and file servers for known viruses.
Mode of operation	Fully 32-bit Windows NT or 2000 process. In addition to the Graphical User Interface (GUI) version, a Command Line Interface (CLI) version with similar functionality is available.
On-access scanning	InterCheck FSFD (File System Filter Driver).
Updates	12 per year, sent by post at the beginning of each month, or available for download via www.sophos.com .
Virus alerts	Network managers can be automatically notified by a network message to specified users or machines, by SMTP email or by InterCheck log messages. In addition, the user can be alerted and an entry can be placed in the Windows NT or 2000 application event log.
Specification of items to be checked	Individual files, recursive searching of subdirectories and individual disk subdirectories.
Specification of identities	Between monthly updates, interim virus identities (.IDEs) for new in-the-wild viruses can be downloaded from www.sophos.com and added into SWEEP at run-time; they can also be sent as faxed ASCII text.
System requirements	Windows NT or 2000 Server or Workstation edition, version 3.51 or above.
File systems supported	FAT, NTFS, HPFS, CDFS, InterDrive NFS (FTP Software), Chameleon NFS (NetManage), Maestro NFS (Hummingbird Communications), Solstice NFS (Sun Microsystems).
Networks supported	Microsoft LanManager, Novell NetWare, TCP/IP and Digital Pathworks.

SOPHOS
ANTI-VIRUS

Sophos Plc • The Pentagon • Abingdon Science Park • Abingdon • OX14 3YP • England
Tel 01235 559933 • Fax 01235 559935

Sophos Inc • 50-S Audubon Road • Wakefield • MA 01880 • USA
Tel 781 213 3456 • Fax 781 213 5466

Sophos Pty Ltd • Level 4, 725 George Street • Sydney • NSW 2000 • Australia
Tel 02 9212 1600 • Fax 02 9212 1788

Sophos Sarl • 1 Place Victor Hugo • 92411 Courbevoie Cedex • France
Tel 01 41 99 94 20 • Fax 01 41 99 94 49

Sophos GmbH • IT-Park • Am Hahnenbusch • 55268 Nieder-Olm • Germany
Tel 06136 91193 • Fax 06136 911940

Sophos KK • YBP W Tower (11F) • 134 Godo-cho Hodogaya-ku • Yokohama 240-0005 • Japan
Tel 045 348 8400 • Fax 045 348 8989

www.sophos.com

